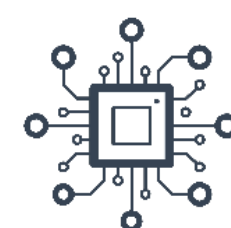


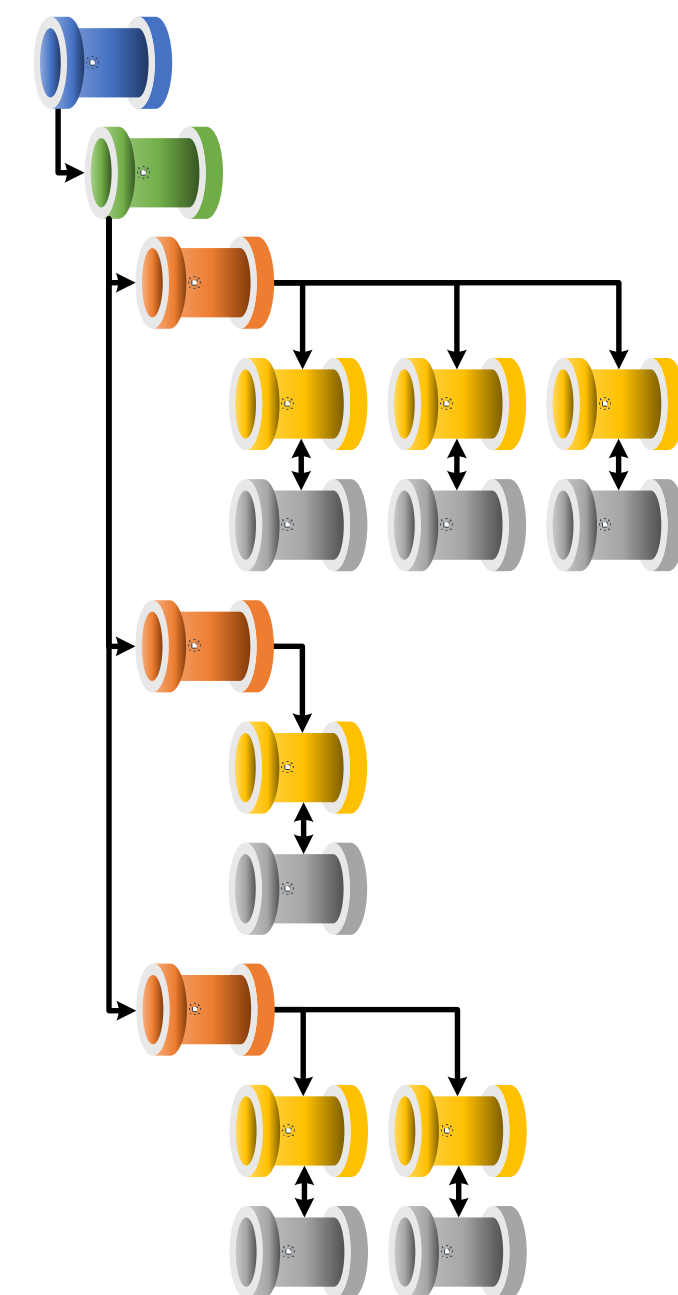
# Azure Data Integration Pipelines

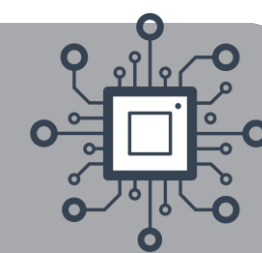
Fundamentals to Level 300

Paul Andrew | Technical Architect in Azure CoE



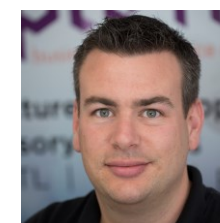
Mr Paul Andrew  
Consulting Ltd





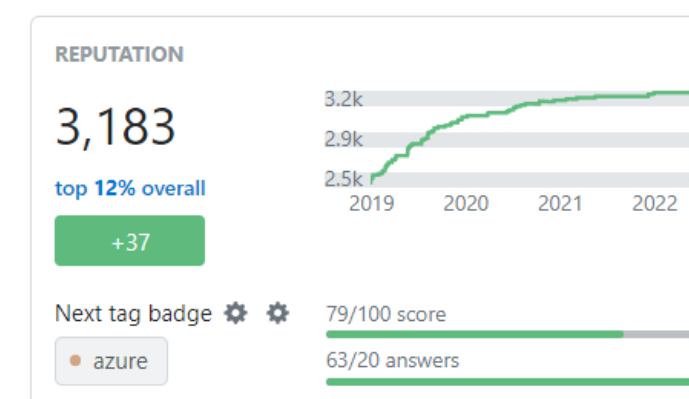
Paul Andrew is a Microsoft Data Platform MVP and Technical Architect within the Avanade Centre of Excellence team, with over 15 years' experience in the industry, working as an engineer and solution architect. Day-to-day Paul is accountable for delivering enterprise grade data insights to international organisations where he wields the complete stack of Azure Data Platform resources. Paul leads delivery teams around the globe implementing the latest design patterns, creating architectural innovations, and defining best practice to ensure technical excellence for customers across a wide variety of industry verticals. Paul is **passionate about technology**, which is demonstrated in the community, he speaks at events and shares his knowledge gained from real world experience through his blog. Paul maintains the view that his job is also his hobby and doesn't ever want to take his fingers off the developer's keyboard while maintaining a growth mindset.

Husband, father of three, Star Wars and Lego fan. Run's, swims, plays darts. Enjoys doing geeky things to support home automation and electricity generation.



[mrpaulandrew.com/about](http://mrpaulandrew.com/about)

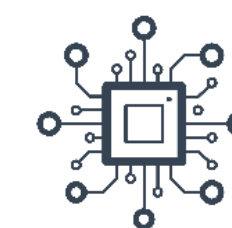
## Summary



Talks Delivered	Total Audience	Average Audience	Countries	Cities	Event Types
128	7033	54.95	12	31	30



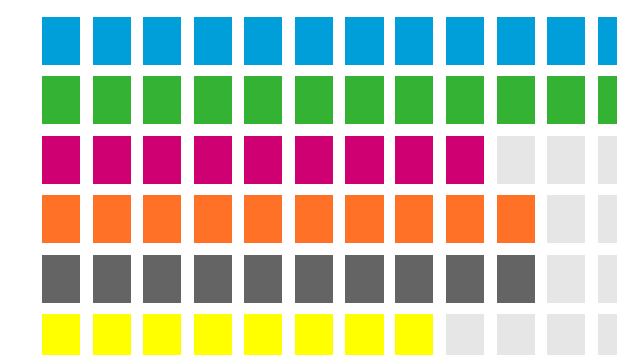
avanade

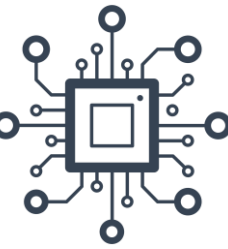


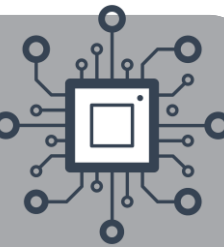
Mr Paul Andrew  
Consulting Ltd

- Banking
- Mining
- Retail
- Gaming
- Manufacturing
- Software Development
- Healthcare

Technical Leadership  
Data Platform Architecture  
Solution Delivery Lead  
Data & Test Engineer  
Data Strategy  
Release Management





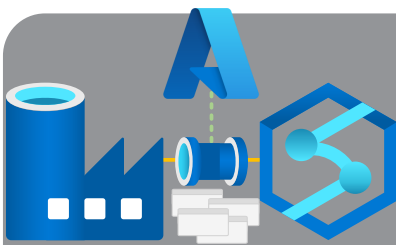


# What do you want to get out of this session?

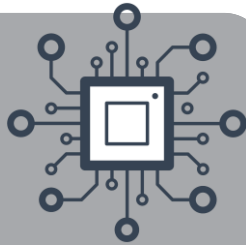
[menti.com](https://menti.com)

**2289 2123**





# Azure Data Integration Pipelines



## Full Day Workshop – Fundamentals to Level 300



Module 1: Pipeline Fundamentals

- The History of Azure Orchestration
- Synapse Analytics vs Data Factory
- Integration Components
- Common Activities
- Execution Dependencies

Module 2: Integration Runtime Design Patterns

- Compute Types
  - Azure
  - Hosted
  - SSIS
- Patterns & Configuration

Module 3: Data Transformation

- Data Flows
- Power Query Injection
- Spark Configuration
- Use Cases

Module 4: Dynamic Pipelines

- Expressions & Interpolation
- Simple Metadata Driven Execution
- Dynamic Content Chains
- Reference Names

Module 5: Pipeline Extensibility

- Azure Batch Service
- Pipeline Custom Activities
- Azure Management API
- Azure Functions

Labs

- Creating Resources
- Building A Copy Pipeline
- Reusable Code
- Creating a Data Flow
- Publish & Monitoring
- Exploring Pipelines with Synapse

Module 6: Execution Parallelism

- Control Flow Scale Out
- Concurrency Limitations
- Internal vs External Activities
- Orchestration Framework - [procfwk.com](http://procfwk.com)

Module 7: VNet Integration

- Private Endpoints
- Managed VNet's
- Firewall Bypass

Module 8: Security

- Service Principals
- Managed Identities
- Azure Key Vault Integration
- Customer Managed Keys
- Pipeline Access & Permissions

Module 9: Monitoring & Alerting

- Studio Monitoring
- Log Analytics & Kusto Queries
- Operational Dashboards
- Advanced Alerting

Module 10: Solution Testing

- Development Time Validation
- Test Coverage
- NUnit Tests

Module 11: CI/CD

- Source Control vs Developer UI
- Basic ARM Template Deployments
- Advanced Deployment Patterns

Module 12: Final Thoughts

- Costs & Conclusions
- Best Practices

<< BREAK

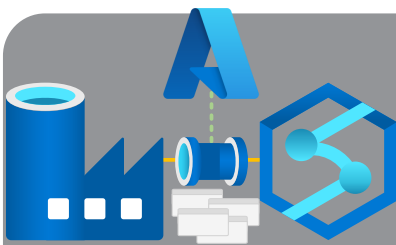
15:00 – 15:15

<< LUNCH

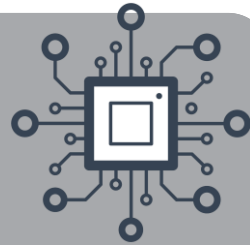
13:00 – 13:45

Module 13: Bonus

- An Architects Recap



# Azure Data Integration Pipelines



## Full Day Workshop – Fundamentals to Level 300



<div>Module 1: Pipeline Fundamentals</div> <div><div>The History of Azure Orchestration</div><div>Synapse Analytics vs Data Factory</div><div>Integration Components</div><div>Common Activities</div><div>Execution Dependencies</div></div> <div>Module 2: Integration Runtime Design Patterns</div> <div><div>Compute Types</div><div><div>Azure</div><div>Hosted</div><div>SSIS</div></div><div>Patterns &amp; Configuration</div></div> <div>Module 3: Data Transformation</div> <div><div>Data Flows</div><div>Power Query Injection</div><div>Spark Configuration</div><div>Use Cases</div></div> <div>Module 4: Dynamic Pipelines</div> <div><div>Expressions &amp; Interpolation</div><div>Simple Metadata Driven Execution</div><div>Dynamic Content Chains</div><div>Reference Names</div></div>	<div>Module 5: Pipeline Extensibility</div> <div><div>Azure Batch Service</div><div>Pipeline Custom Activities</div><div>Azure Management A</div><div>Azure Functions</div></div> <div>Labs</div> <div><div>Creating Resources</div><div>Building A Copy Pipeline</div><div>Reusable Code</div><div>Creating a Data Flow</div></div> <div>Module 6: Execution Parallelism</div> <div><div>Control Flow Scale Out</div><div>Concurrency Limitations</div><div>Internal vs External Activities</div><div>Orchestration Framework - <a href="#">procfwk.com</a></div></div> <div>Module 7: VNet Integration</div> <div><div>Private Endpoints</div><div>Managed VNet's</div><div>Firewall Bypass</div></div>	<div>Module 8: Security</div> <div><div>Service Principals</div><div>Managed Identities</div><div>Azure Key Vault Integration</div><div>Customer Managed Keys</div><div>Pipeline Access &amp; Permissions</div></div> <div>Module 9: Monitoring &amp; Alerting</div> <div><div>Studio Monitoring</div><div>Log Analytics &amp; Kusto Queries</div><div>Operational Dashboards</div><div>Advanced Alerting</div></div> <div>Module 10: Solution Testing</div> <div><div>Development Time Validation</div><div>Test Coverage</div><div>NUnit Tests</div></div> <div>Module 11: CI/CD</div> <div><div>Source Control vs Developer UI</div><div>Basic ARM Template Deployments</div><div>Advanced Deployment Patterns</div></div> <div>Module 12: Final Thoughts</div> <div><div>Costs &amp; Conclusions</div><div>Best Practices</div></div> <div>Module 13: Bonus</div> <div><div>An Architects Recap</div></div>
---	---	---

Breadth

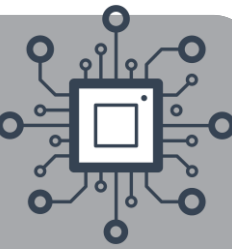
Depth

<< BREAK  
10:30 – 10:45

<< LUNCH  
13:00 – 13:45

<< BREAK  
15:00 – 15:15



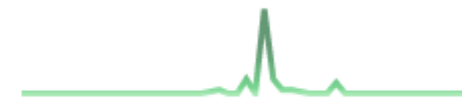


<https://github.com/mrpaulandrewltd>

### Azure-Data-Integration-Pipeline-Training

Public

Training workshop content on Azure Data Factory and  
Azure Synapse Analytics Data Integration Pipelines



● TSQL    ☆ 15    ⚖ BSD-3-Clause    🍴 9    ⌚ 0    📄 0    Updated 1 hour ago